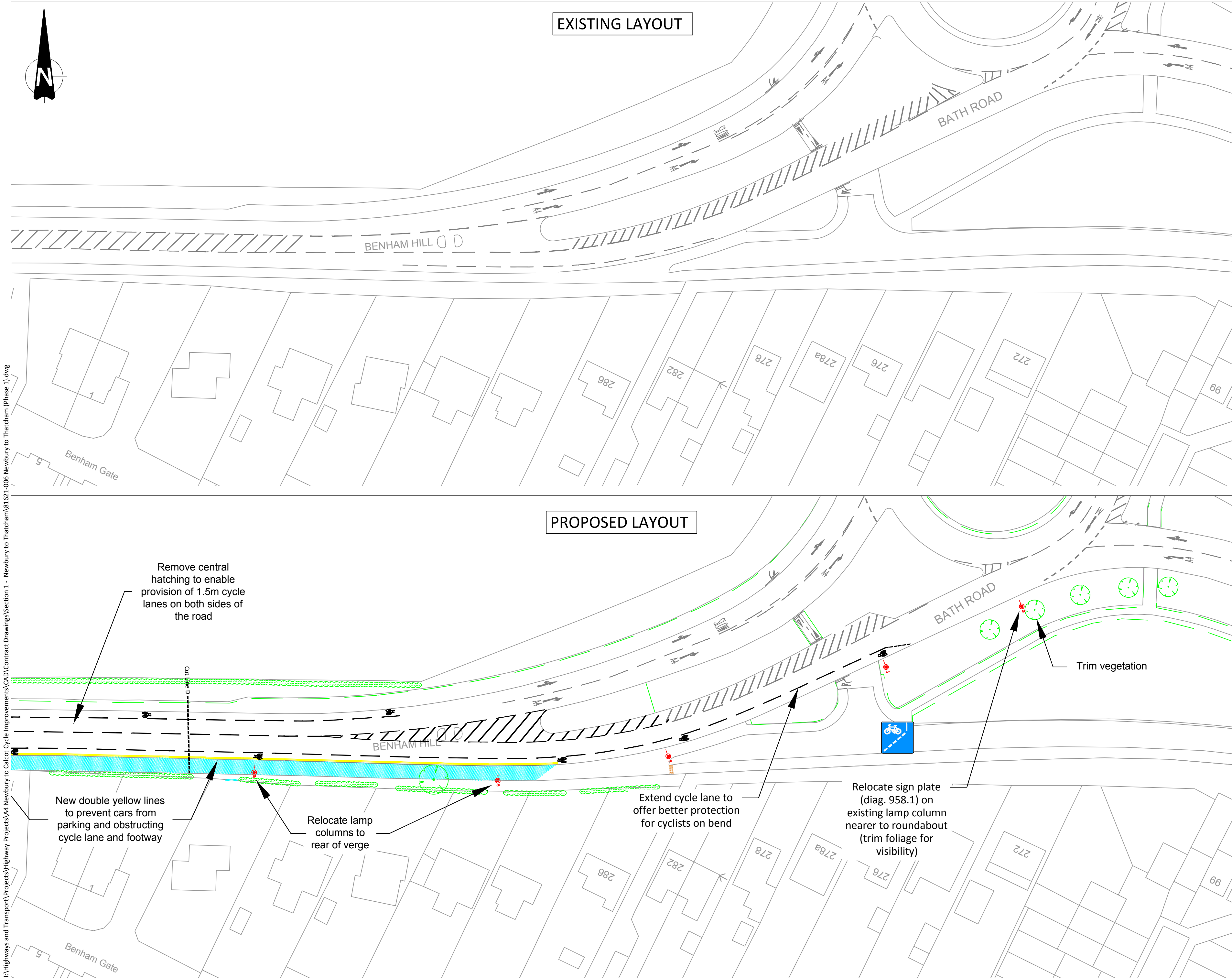


I:\Highways and Transport\Projects\Highway Projects\A4 Newbury to Calcot Cycle Improvements\CAD Contract Drawings\Section 1 - Newbury to Thatcham (Phase 1).dwg



- KEY**
- Dropped kerb
  - New kerbline
  - Footway widening
- NOTES**
- 1) All dimensions are shown in metres unless shown otherwise.
  - 2) This drawing shows a proposed option and is subject to change following the location, depth and height of existing utility services.
  - 3) WBC Standard Details must be adhered to at all times unless specified by the Overseeing Organisation.
  - 4) Prior to any excavations the contractor will establish the location of existing utility services.

|        |             |    |    |          |
|--------|-------------|----|----|----------|
| B      |             |    |    |          |
| A      |             |    |    |          |
| REV    | DESCRIPTION | DR | AU | REV DATE |
| Status |             |    |    |          |



Transport & Countryside | Council Offices  
Market Street | Newbury | RG14 5LD

Project Title

NCN422 Section 1 Phase 1  
Cycling Improvements

Drawing Title

Tull Way Roundabout to Bath  
Road (pg5 of 5)

|                |          |            |            |               |
|----------------|----------|------------|------------|---------------|
| Date           | Drawn By | Checked By | Paper Size | Drawing Scale |
| 26/07/17       | JBK      | NS         | A2         | 1:500         |
| Drawing Number | Revision |            |            |               |

81621-005-05